

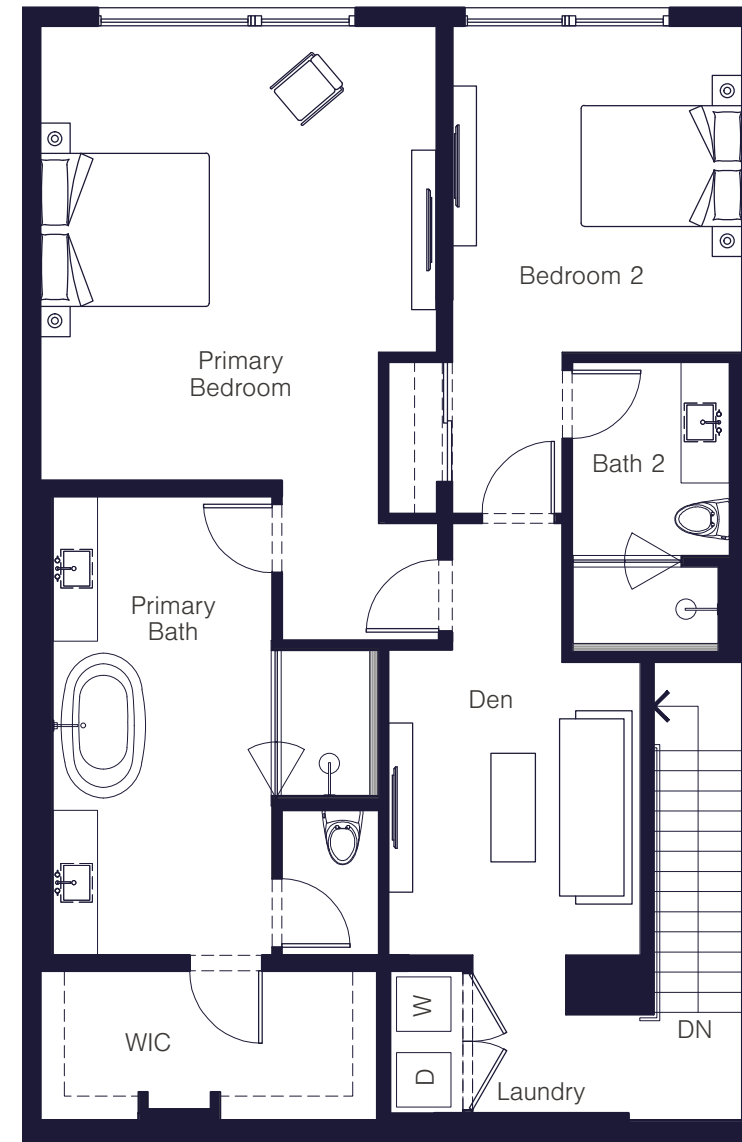
# Residence 108

TWO-LEVEL TOWNHOME | 3 BEDROOMS, 3 BATHS | 2,604 SQFT | 549 ROOFTOP SQFT

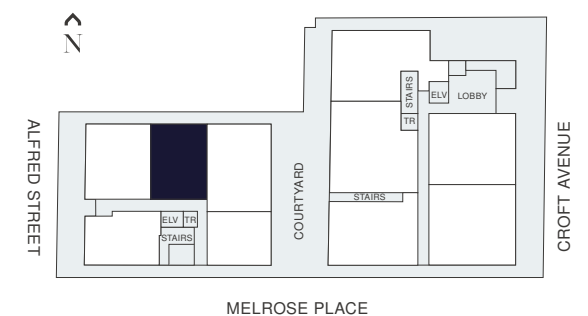
THE  
ALFRED



LOWER LEVEL



UPPER LEVEL



725 N. CROFT AVENUE, LOS ANGELES, CA 90069 | THEALFREDLA.COM

© etco Homes. Prices and terms subject to change. Square footages are approximate. Builder has right to change square footage, plans, and pricing without notice. All illustrations are artist's conceptions, are not to scale and are subject to change in actual production. CalDRE license no. 01878688.